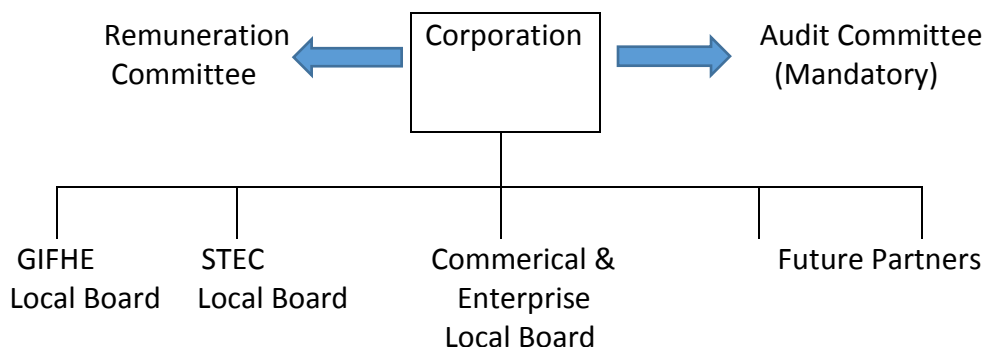


Corporation Structure / Membership 2016-17 as at 1 January 2017



Corporation Membership 11 members (quorum 6)

Tony Bramley (Chair of GIFHE Board and Vice-Chair of the Corporation)
 Roger Cannon (Chair of STEC Board)
 Lesley Charlesworth-Browne (Staff member)
 Robert Edwards (Chair of C & E Board)
 Philip Jackson (Audit Committee member)
 Jonathan Lovelle (Chair of the Corporation)
 Lucy Ottewell (Staff)
 Erika Stoddart (Chair of Audit Committee)
 Gill Alton (CEO)
 Liam Atkinson GIFHE Student
 Chloe Robinson STEC Student

In attendance at Corporation meetings

Susan Bailey (Clerk)
 Don Everitt (GD Finance)
 Debra Gray (Principal GIFHE)
 Ann Hardy (Principal STEC)
 Sam Whitaker (GD SP)

- * The Corporation has agreed to reduce the number of staff governors from 2 to 1 (following the end of term of office of current staff governors) The Corporation has agreed to reduce the number of student governors from 2 to 1. The reduction in staff and student governors is subject to the results of consultation with both staff and student groups (across the whole Group) Elections across the whole Group will take place for the Corporation's Staff and Student Governors.
- * The Corporation has agreed that the responsibility for searching and appointing new governors and the re-appointment of existing governors is now a matter for the Corporation directly taking advice from local boards accordingly and in line with revised and agreed governor appointment procedures. The Corporation agreed that a Task & Finish Group could be set up to assist the Search process as and when necessary.

Local Board & Committee Membership 2016-17 as at 1 January 2017

GIFHE Board 10 Members (Quorum 5)	Scarborough TEC Board 10 Members (Quorum 5)	Commercial & Enterprise Board 10 Members (Quorum 5)	AUDIT 6 Members (Quorum 3)	REMUNERATION 5 Members (Quorum 3)
Jane Bowman Tony Bramley (Chair) Lesley Charlesworth-Browne (Staff) Debra Gray (Principal) David Hilditch Ian Lindley Alan Speight Rob Walsh Liam Atkinson (Student) 1 vacancy	Kai Adegbembo Suzanne Burnett Roger Cannon (Chair) Brian Davison Ann Hardy (Principal) Tom Fox David Kelly Lynda Rowley (Staff) Chloe Robinson (Student) 1 vacancy	James Baker Rob Edwards Jason Leddon Jane Miller Mike Parker Liz Parry Jane Spencer Chris Tonge Michelle Lalor Sam Whitaker (Exec)	Philip Jackson Lucy Ottewell (S) Erika Stoddart (Chair) (Not the Chair of the Corporation) 3 vacancies; 2 co-optees max	Tony Bramley (Chair) Roger Cannon Robert Edwards Jonathan Lovelle Erika Stoddart The Remuneration Committee comprises the Chair of each Local Board, the Chair of the Corporation and Chair of Audit Committee
In attendance Susan Bailey (Clerk) Don Everitt GD Finance <i>By invitation only</i> <i>SMT / EMT as required</i>	In attendance Susan Bailey (Clerk) Don Everitt GD Finance <i>By invitation only</i> <i>SMT / EMT as required</i>	In attendance Susan Bailey (Clerk) Don Everitt GD Finance <i>By invitation only</i> <i>SMT / EMT as required</i>	In attendance Susan Bailey (Clerk) Don Everitt GD Finance <i>By invitation only</i> <i>SMT / EMT as required</i>	In attendance Susan Bailey (Clerk) <i>By invitation only</i> <i>Gill Alton (CEO)</i> <i>Stephen Butler (GD HR)</i>

C = Chair VC = Vice Chair E = External / Co-opted SG = Student Governor FE = Further Education HE = Higher Education
 S = Staff GD = Group Director STEC = Scarborough TEC C & E = Commercial & Enterprise GIFHE = Grimsby Institute of Further & Higher Education
 SMT = Senior Management Team EMT = Executive Management Team

NB: Gill Alton CEO to receive a copy of all agendas and papers for every meeting of the Local Boards, Committees and Corporation meetings.